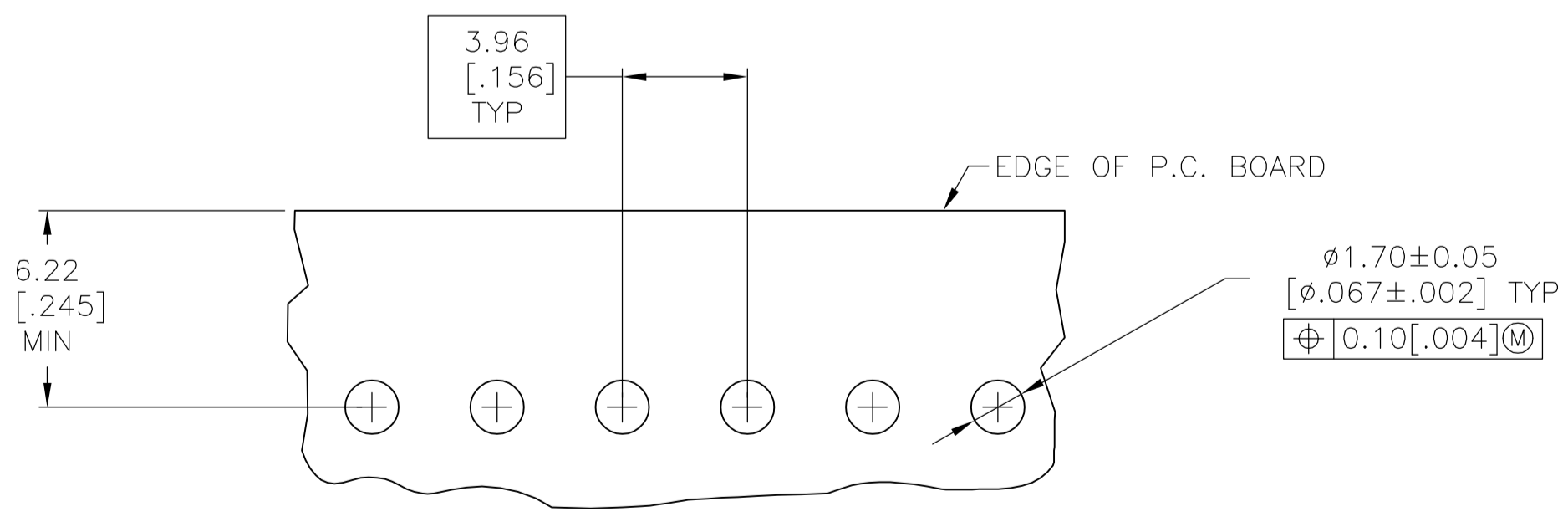
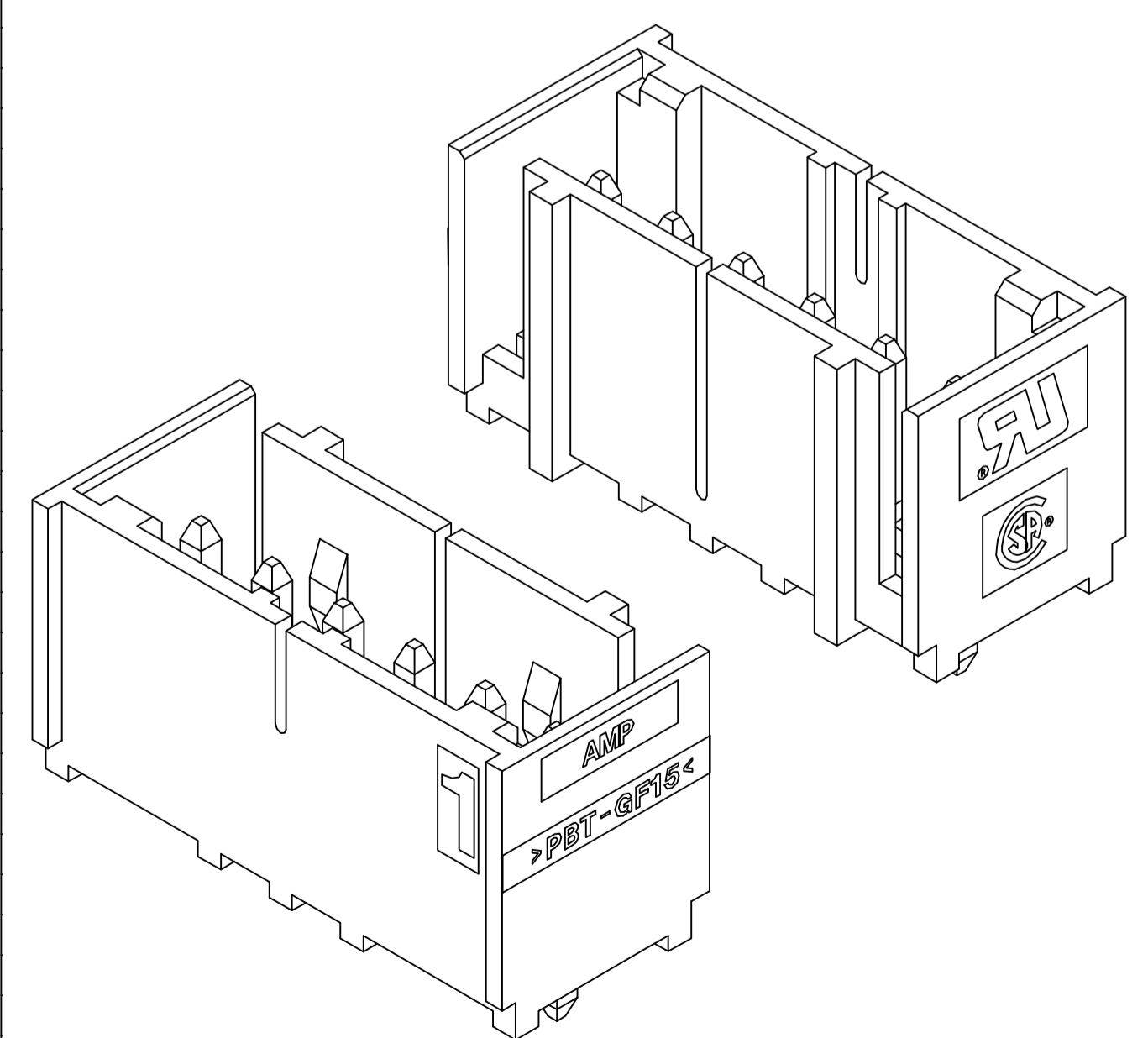
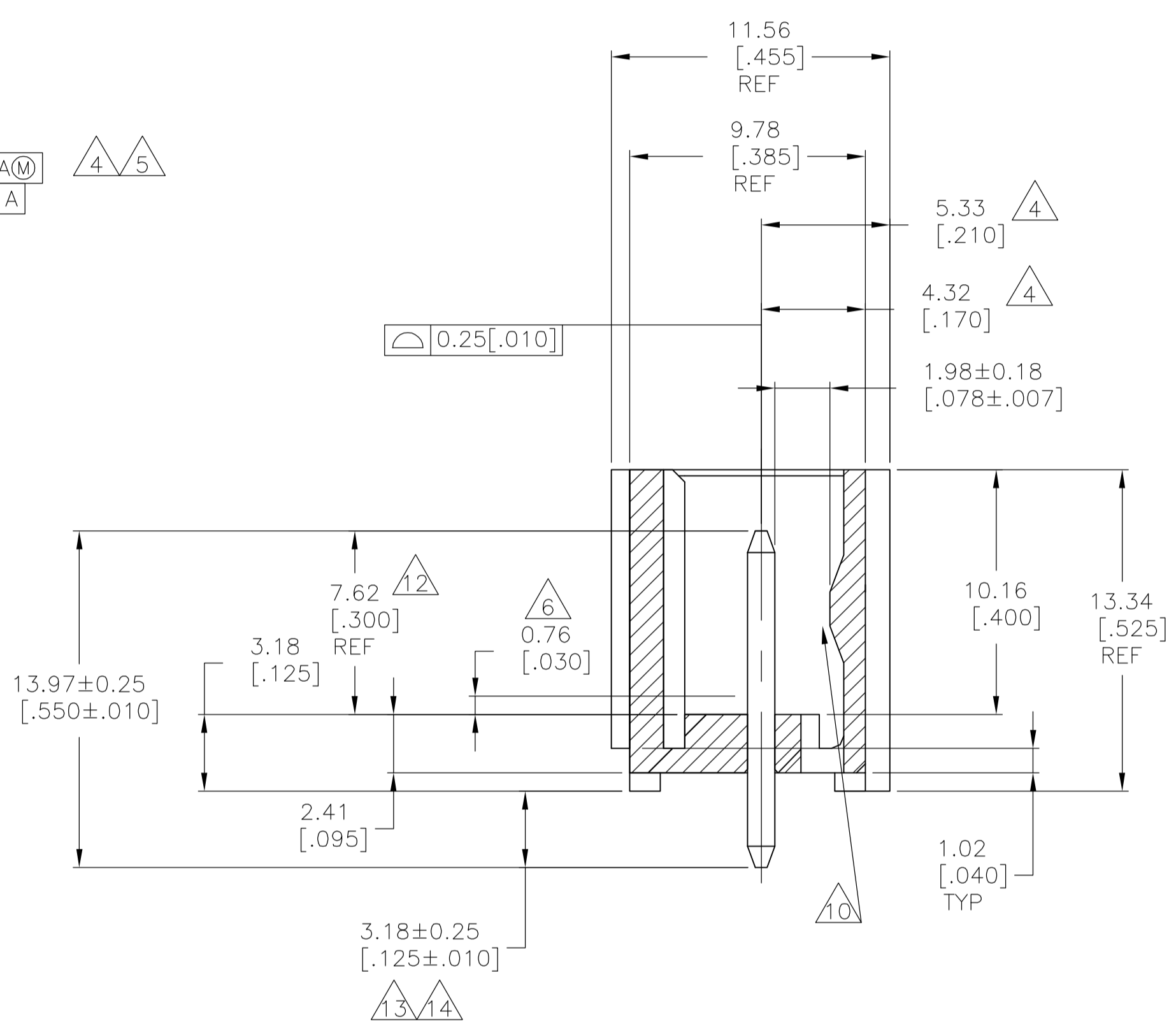
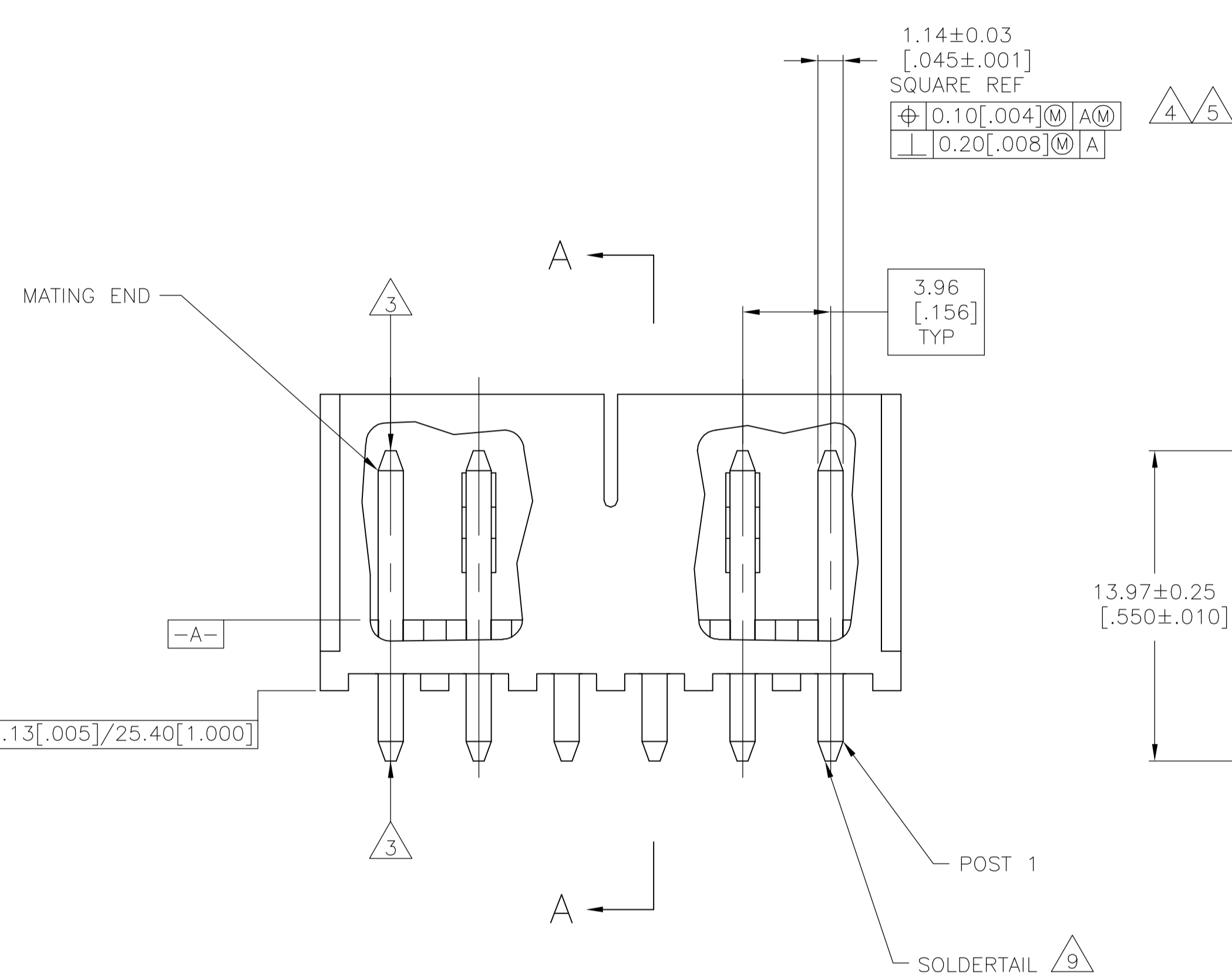


- 1 MATERIAL: HOUSING - THERMOPLASTIC POLYESTER, GLASS FILLED, UL94-0. POST - COPPER ALLOY.
- 2 FINISH: HOUSING - BLACK. POST - SEE NOTES 12, 13 AND 14 FOR PLATING.
- 3 POST TO WITHSTAND 3LBS (16N) MIN AXIAL FORCE IN THIS DIRECTION WITHOUT DISLODGING.
- 4 APPLIES AT -A-
- 5 APPLIES WHEN HEADER IS STRAIGHT.
- 6 PLASTIC PROJECTIONS PERMITTED IN THIS ZONE.
- 7 COORDINATE DIMENSIONS APPLIES FROM CENTER OF ACTUAL FEATURE.
- 8 SOLDER SIDE OF BOARD IS SHOWN.
- 9 POST SOLDERTAIL MUST COMPLY WITH AMP SOLDERABILITY SPEC 109-11-2.
- 10 LATCH DETENT FEATURE APPEARS 1 PLACE ON EACH END OF PART (MAX OF 2 PER PART) ON ALL POSITIONS 4 THRU 12. THE LATCH APPEARS ONLY ONE PLACE ON 2 & 3 POSITION PARTS.
- 11 DIMENSIONS IN BRACKETS ARE IN INCHES.
- 12 GOLD PLATE AREA, 0.00076 [ $0.000030$ ] MIN ALL SIDES: OVER NICKEL UNDERPLATE, 0.00127 [ $0.000050$ ] MIN ALL SIDES AND ENTIRE LENGTH OF POST.
- 13 BRIGHT TIN LEAD (93/7) PLATE AREA 0.00381 - 0.0089 [ $0.000150$  -  $0.000350$ ] ALL FOUR SIDES, 3.18 [ $0.125$ ] MIN..
- 14 MATTE TIN PLATE AREA 0.00381 - 0.0089 [ $0.000150$  -  $0.000350$ ] ALL FOUR SIDES, 3.18 [ $0.125$ ] MIN..



RECOMMENDED MOUNTING HOLE PATTERN FOR 1.57[.062] THICK P.C. BOARD

SECTION A-A

647131-6 SHOWN

12, 14	49.94	1.966	12	3-647131-2	
	45.97	1.810	11	3-647131-1	
	42.01	1.654	10	3-647131-0	
	38.05	1.498	9	2-647131-9	
	34.09	1.342	8	2-647131-8	
	30.12	1.186	7	2-647131-7	
	26.16	1.030	6	2-647131-6	
	22.20	.874	5	2-647131-5	
	18.24	.718	4	2-647131-4	
	14.27	.562	3	2-647131-3	
	10.31	.406	2	2-647131-2	
	12, 13	49.94	1.966	12	1-647131-2
		45.97	1.810	11	1-647131-1
		42.01	1.654	10	1-647131-0
38.05		1.498	9	647131-9	
34.09		1.342	8	647131-8	
30.12		1.186	7	647131-7	
	26.16	1.030	6	647131-6	
	22.20	.874	5	647131-5	
	18.24	.718	4	647131-4	
	14.27	.562	3	647131-3	
	10.31	.406	2	647131-2	

PLATING	MM	IN	NO OF POSN	PART NUMBER
	L	DIM		

THIS DRAWING IS A CONTROLLED DOCUMENT.

DIN	B. LEWIS	6-17-98		Tyco Electronics Corporation Harrisburg, PA 17105-3608
CHK	R. SWING	6-17-98		
APVD	D. CLARK	6-17-98	NAME: MTA-156 SHROUDED HEADER ASSEMBLY, STRAIGHT .045 SQUARE POST, .000030 GOLD, W/O RETENTION PEG	
DIMENSIONS: mm [INCHES]			APPLICATION SPEC	
TOLERANCES UNLESS OTHERWISE SPECIFIED:			SIZE: A1	
0 PLC	±	-	DRAWING NO: 00779	
1 PLC	±	-	C=647131	
2 PLC	±	-	RESTRICTED TO	
3 PLC	±	0.05	CUSTOMER DRAWING	
4 PLC	±	0.05	SCALE: 5:1	
ANGLES	±	0.05	SHEET: 1 OF 1	
MATERIAL			REV: D	

